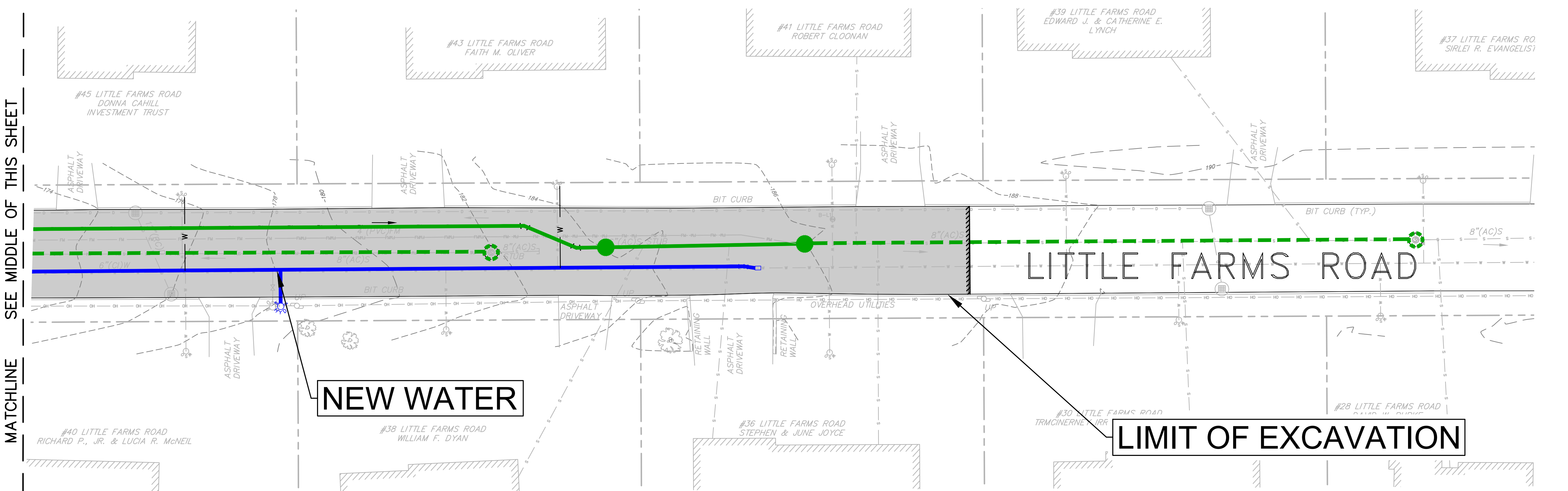
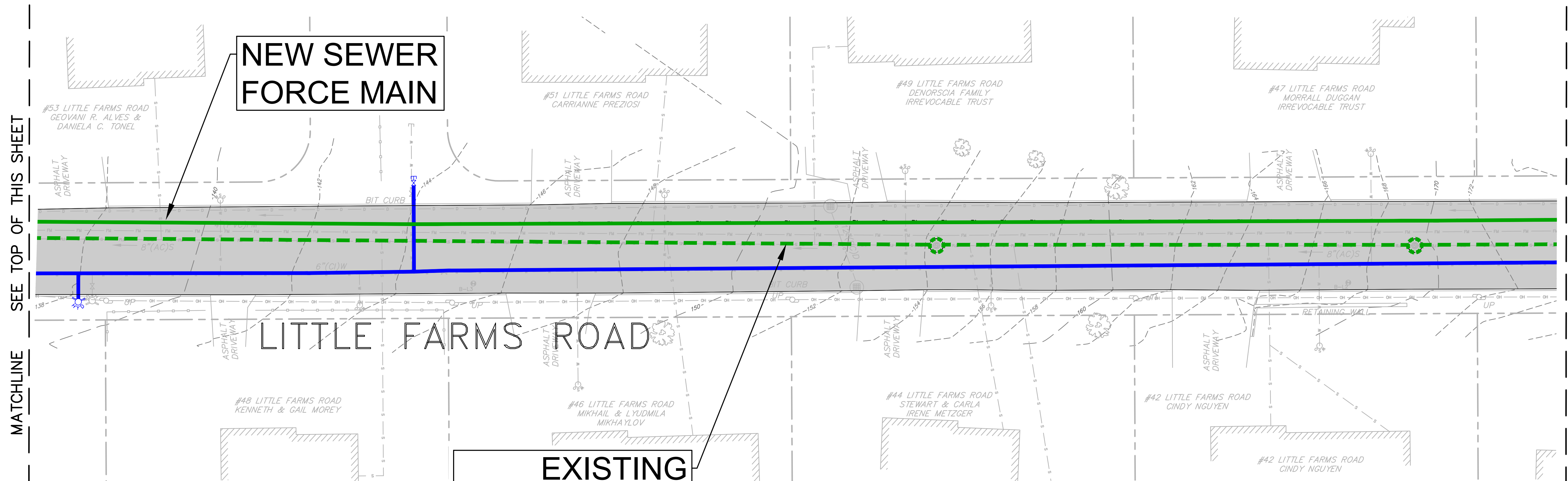
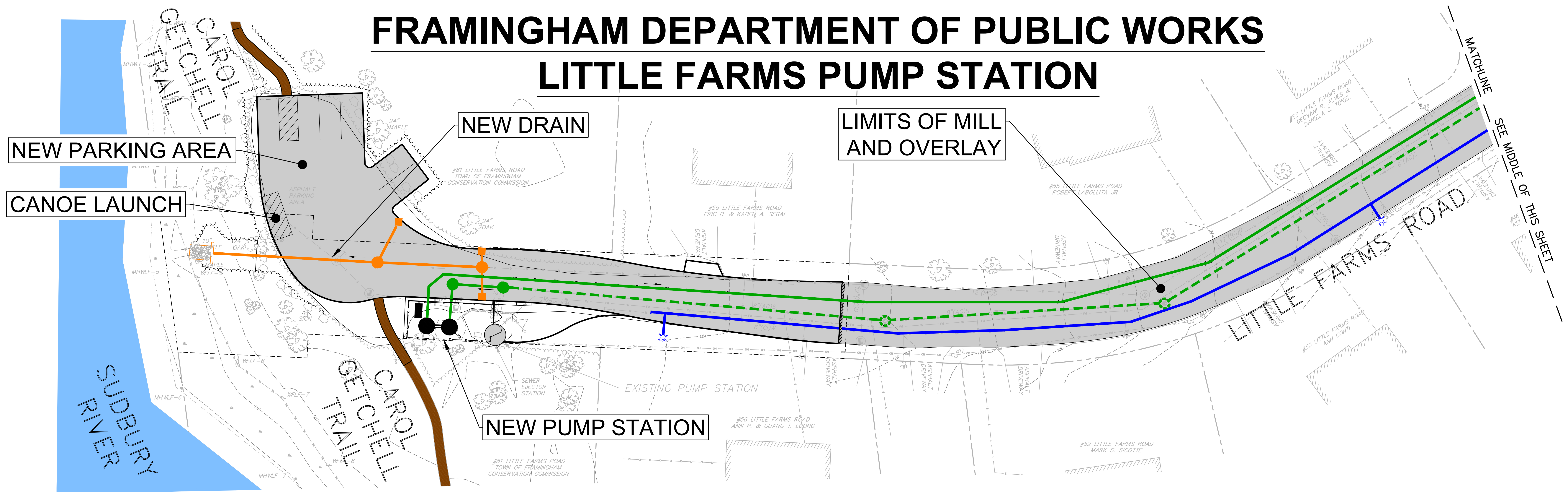


# FRAMINGHAM DEPARTMENT OF PUBLIC WORKS

## LITTLE FARMS PUMP STATION



### SEWER WORK SUMMARY

- REPLACE SEWER PUMP STATION
- REPLACE SEWER FORCE MAIN
- LINE SEWER MAIN AND SERVICES

### DRAIN WORK SUMMARY

- REPLACE DRAIN PIPES, MANHOLES AND CATCH BASINS
- REPLACE DRAIN OUTFALL

### WATER WORK SUMMARY

- REPLACE WATER MAIN
- REPLACE WATER SERVICES TO PROPERTY LINE
- INSTALL TEMPORARY WATER BYPASS DURING CONSTRUCTION

### ROAD WORK SUMMARY

- TRENCH PAVING
- FULL WIDTH MILL AND OVERLAY
- RECONSTRUCT PARKING LOT
- CAROL GETCHELL TRAIL AND CANOE LAUNCH IMPROVEMENTS

