



CHARTER COMMISSION LEGISLATIVE BRANCH SURVEY

July 21, 2016

Created by Adam Blumer with data as of 7/18

SURVEY GOALS: “FOOD FOR THOUGHT” VS. EXACT SCIENCE

- **Goal #1:** to get initial feedback from people about what they might be looking for/looking to avoid in Charter
- **Goal #2:** provide an opportunity for people to share thoughts with the commission in open-ended way
- Number of caveats from the process/design make this far closer to “**food for thought**” than exact science.



Image courtesy of Park Slope Civic Council



NOTE TO READER

- The data in this is slightly different from what was presented publicly at the meeting of 7/18 because we were able to look at possible duplicate entries via duplicate IP addresses and discard some surveys that were highly likely to be from the same person. The process used is explained on slides 4 and 5



SURVEY BASICS

- Posted online, publicized in newspaper/other media
- Publicized via Charter Commission Facebook pages, Framgov, and several other Facebook groups as well as at meetings
- 272 responses, but 15 were discarded as likely being repeats from the same person. Thus, 257 surveys were used to compile data.
- About 75 comments in the “open response area”



DEALING WITH MULTIPLE ENTRIES: MAKING IT AS ACCURATE AS POSSIBLE

- People could take the survey more than once from same computer, but IP addresses were captured to see if there were possible duplicate/multiple survey entries.
- There are 17 times when one IP address had two responses. Those were kept in the data under assumption that it could be spouses answering separately (and most pairs had at least some different responses)
- There were 3 or 4 times that IP addresses had more than 2 entries. In these cases, anything beyond 2 was deleted. This lowered the number of surveys overall from **272** to **257**.

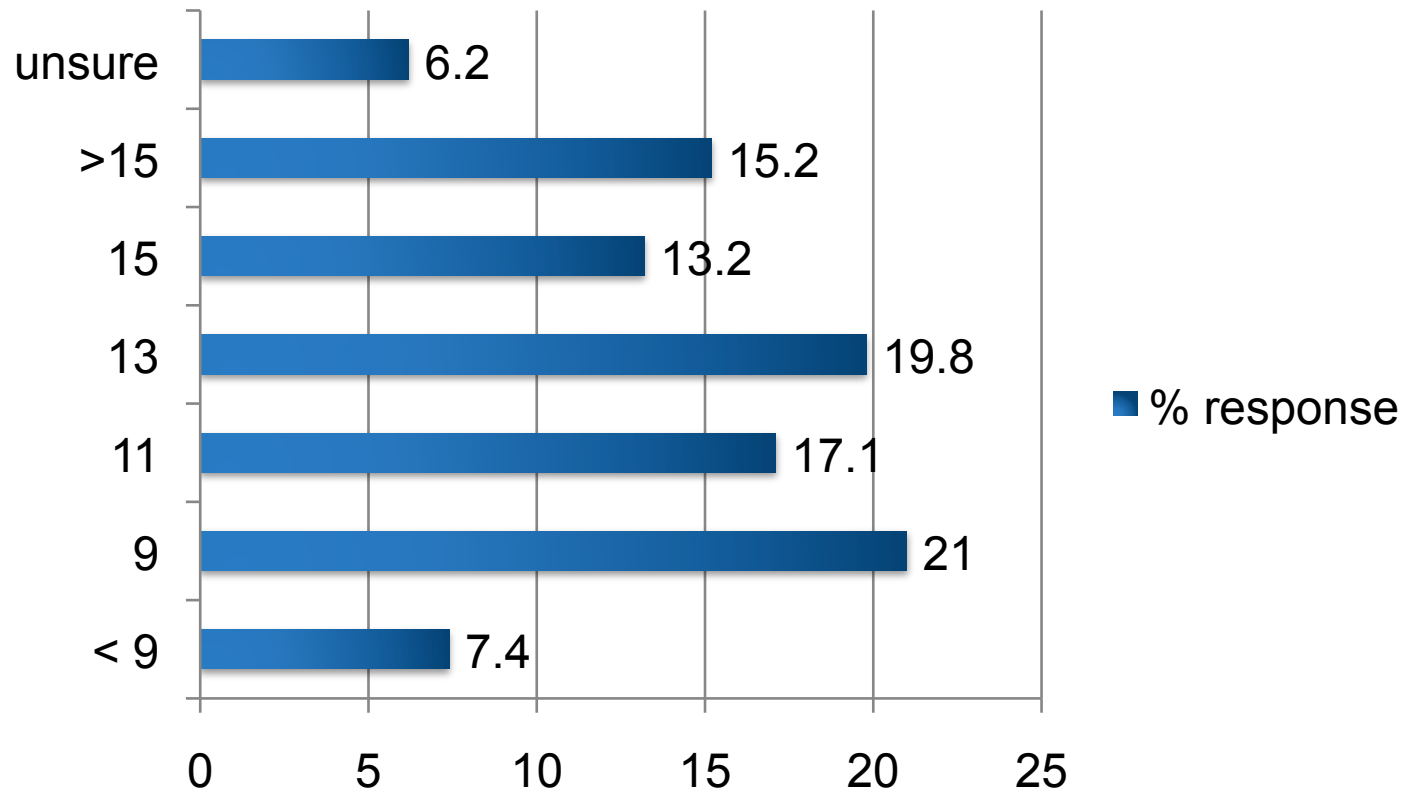


LOOK BEFORE YOU LEAP: SOME BIG CAVEATS

- Small # of responses as a percentage of voters
- Can't guarantee there weren't some out of town responses
- Those who did respond likely to have a stronger set of opinions than public at large vs. a true demographically representative sample
- We don't know the precinct participation in this one
- Some anecdotal feedback that this was more clear than #1 and that the "education links" were helpful



HOW BIG A COUNCIL?



ANOTHER WAY TO LOOK AT THIS...

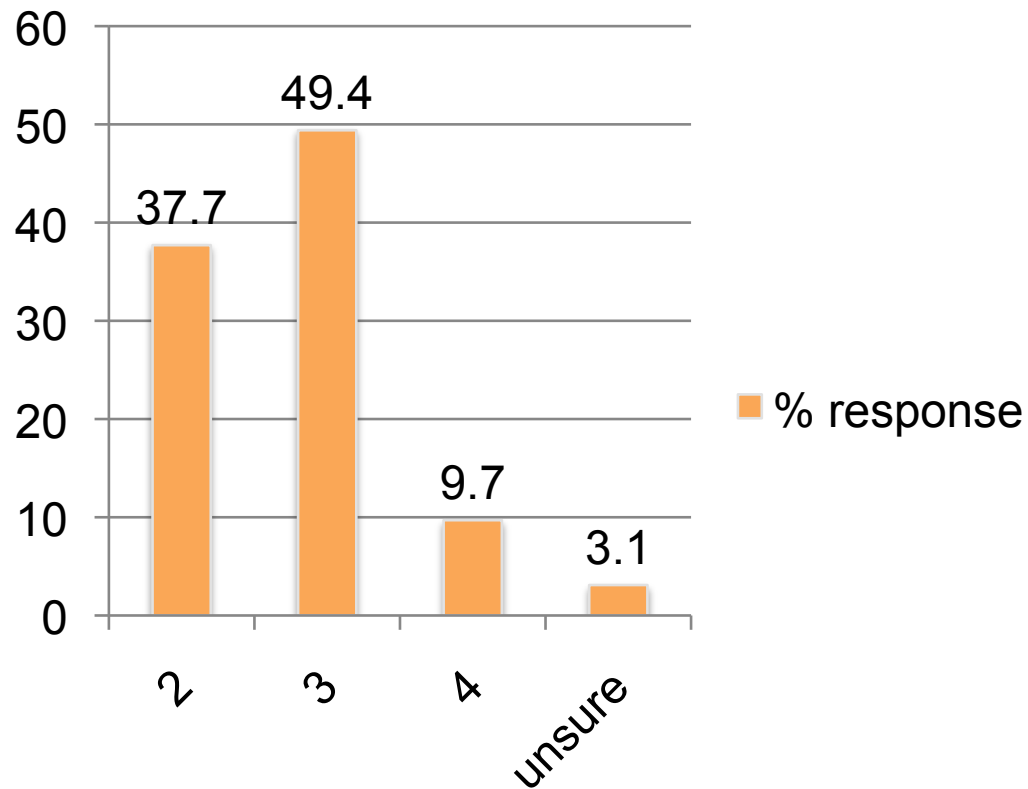
28.4% of respondents preferred a small council
(defined as 9 or less)

36.9% of respondents preferred a medium sized
council (defined as 11-13)

28.4% of respondents preferred a larger council
(defined as 15 and above)



HOW LONG SHOULD TERMS BE?



Caveat: the question did not indicate that most municipal elections are either 2 or 4 years.

Question: if the commission ends up at a different choice, how do we educate public in the final report as to why?



DISTRICT VS. “AT LARGE” REPRESENTATION

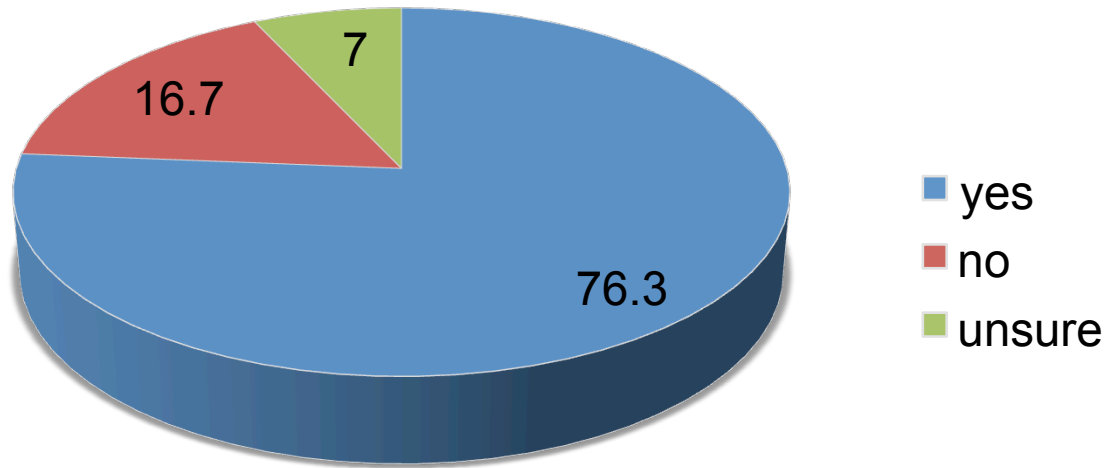
Definitions:

- District reps are elected from a part of the community and theoretically represent that part of the community
- “At large” reps are elected by the whole community and theoretically are expected to take a larger view

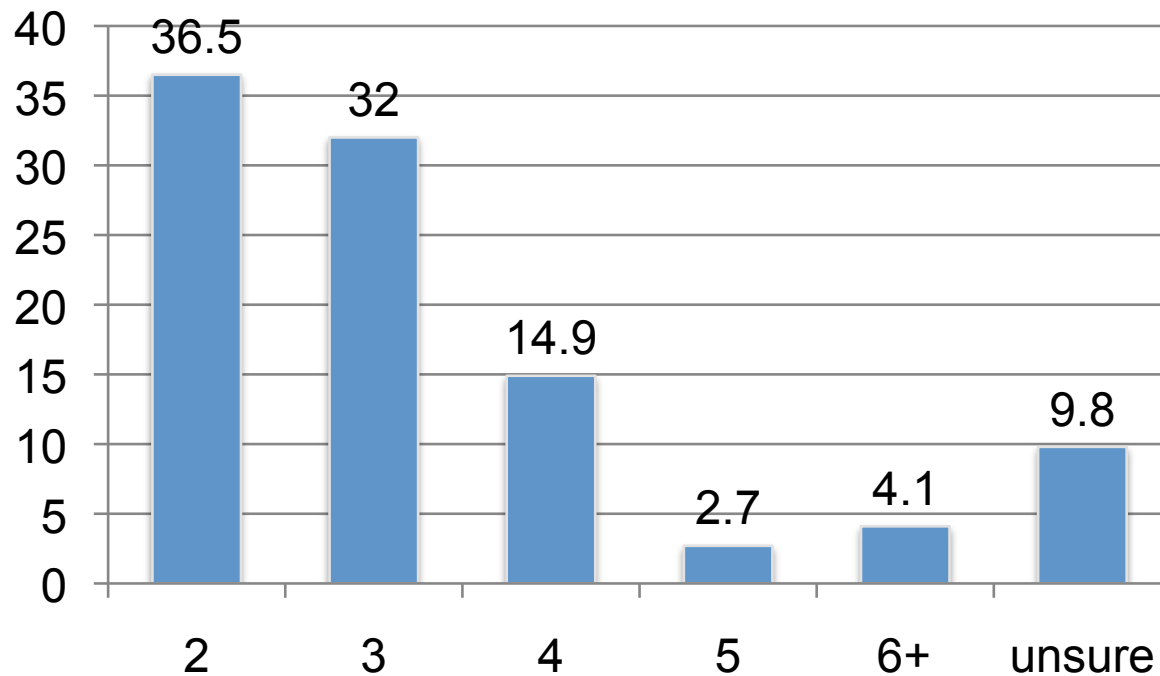
53.3% of respondents preferred a mix of district and at-large representation, but with MORE district reps. Another 19.8% wanted ONLY district reps.

Approximately 10.9% wanted MORE “at large” and another 8.9% wanted only at large.

TERM LIMITS?



IF YES TO TERM LIMITS, HOW MANY?



Note: terms were considered 2 years in this question and the question asked about consecutive terms, not a term limit that would ban people from ever running again

■ % response



CLERK...ELECTED OR APPOINTED?

49.8% of respondents preferred the clerk be appointed

36.5% of respondents preferred the clerk be elected

12.1% of respondents unsure

Those in favor of elected clerk preferred the council appoint clerk rather than the executive, by 45-37% margin, with about 18% unsure



IF YOU ARE WONDERING: ALIGNMENT AND DIFFERENCES BETWEEN COMMISSION'S POSSIBLE PROPOSAL AND SURVEY DATA

- Alignment on a medium sized council
- Alignment on mix of district and at-large
- Alignment on having more district reps than at large
- Alignment on having clerk appointed by council

- Differences in length of terms
- Differences in term limits

Note: No survey questions asked about # of signatures for ballot or citizen relief measures