

43214

SITE PLAN

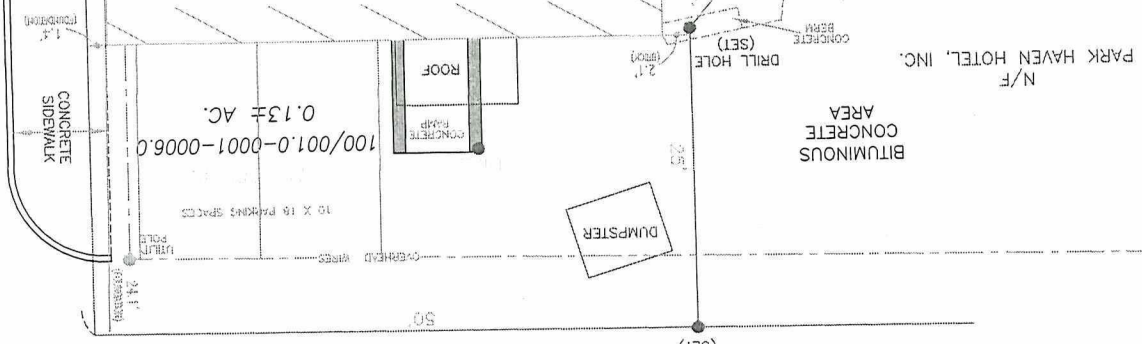
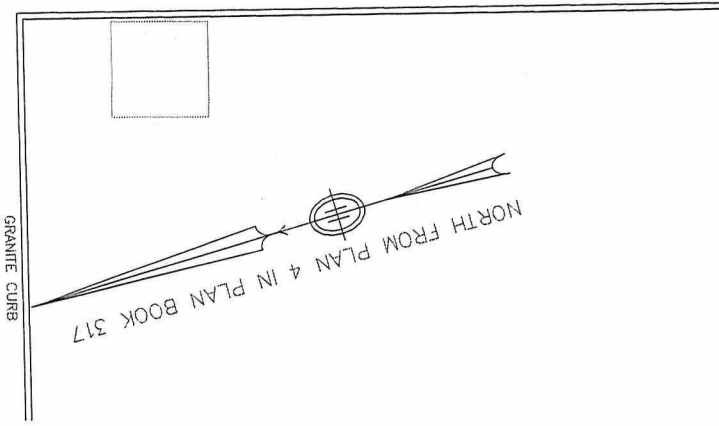
15 HOWARD STREET  
A.K.A. 39 HOWARD STREET  
FRAMINGHAM, MASSACHUSETTS  
1 INCH = 10 FEET JULY 22, 2013  
SNELLING & HAMEL ASSOCIATES, INC.  
PROFESSIONAL LAND SURVEYORS & ENGINEERS  
10 LEWIS STREET P.O. BOX 102  
LINCOLN, MASSACHUSETTS 01773

OWNER OF RECORD:

MILCA LOPES  
BK.53045 PG.82

N/F  
FRAMINGHAM SAVINGS BANK

20.0' WIDE FIRE LANE



N/F  
PARK HAVEN HOTEL, INC.

N/F  
OLD COLONY HOTEL, LLC

#15 HOWARD STREET  
A.K.A.  
#39 HOWARD STREET

PROPOSED  
LANDING

PROPOSED  
ACCESS RAMP

BENCHMARK: (ASSUMED DATUM)  
BM1 - TOP OF CONCRETE SIDEWALK AT DRILL HOLE AT LOT CORNER  
ELEVATION = 100.00  
BM2 - TOP CORNER OF WEST END RETAINING WALL  
ELEVATION = 95.76

- REFERENCES:
- PLAN 4, IN PLAN BOOK 317
  - LAND COURT PLAN 10576B
  - PLAN NUMBER 306 OF 1947

NOTE:  
- THE LOCATION OF THE UTILITIES IS SHOWN AS APPROXIMATE, BASED ON FIELD OBSERVATION. THE UTILITIES SHOULD BE MARKED ON THE GROUND BY DIG-SAFE, PRIOR TO EXCAVATION.

FRANKLIN STREET (33 FEET WIDE)

I HEREBY STATE THAT THE LOCATION OF THE FEATURES SHOWN HEREON IS THE RESULT OF A FIELD SURVEY PERFORMED AS OF JULY 15, 2013 WITH THE USE OF A TOPCON TOTAL STATION.



JOHN R. HAMEL  
PROFESSIONAL  
LAND SURVEYOR

DATE

FILE: 15032.DWG  
JULY 22, 2013

HOWARD STREET

N/F  
ARMENIAN CHURCH  
OF METRO WEST  
REALTY TRUST

