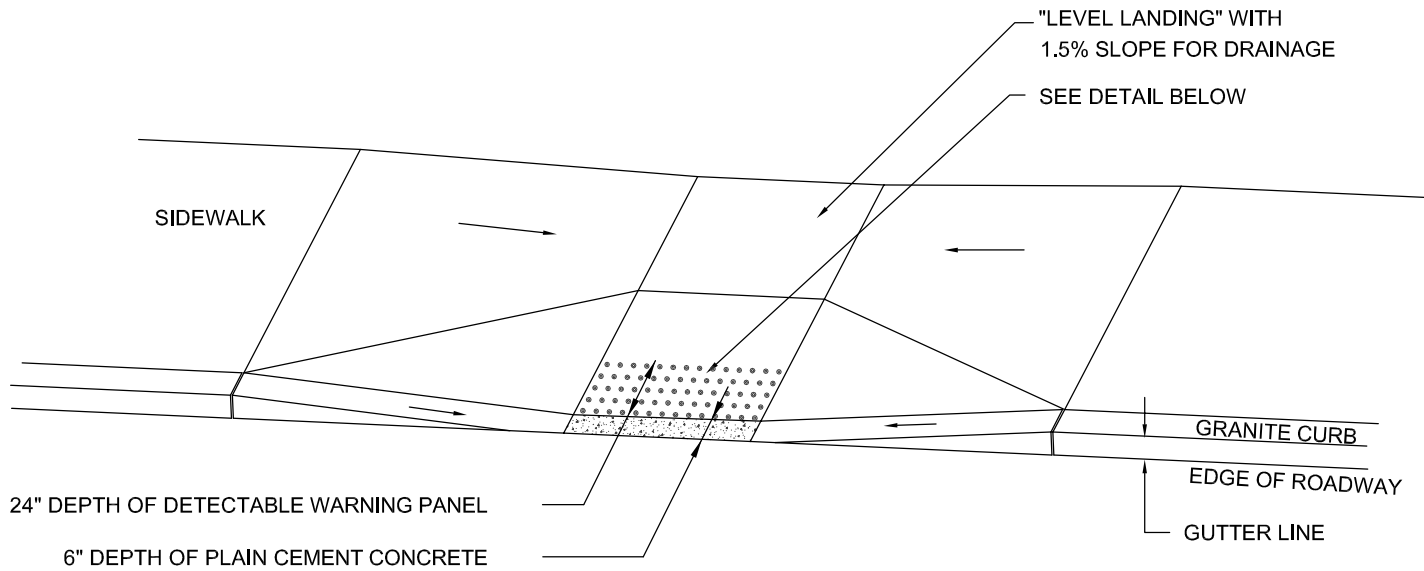
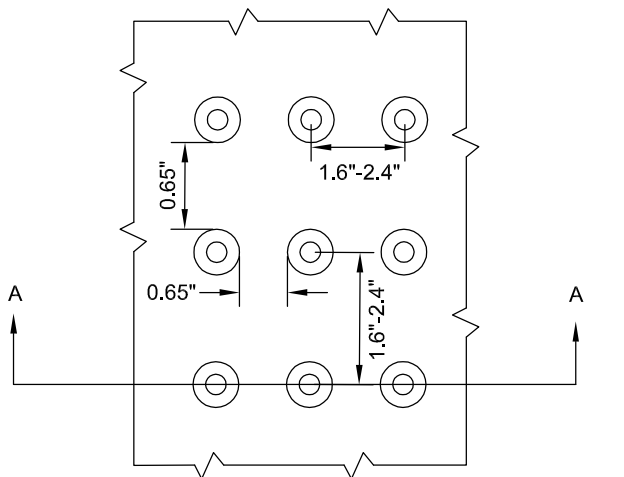


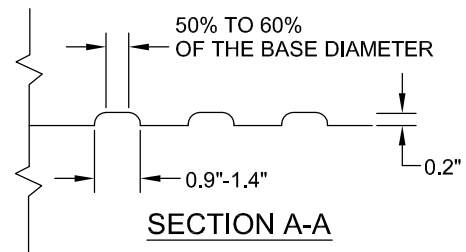
WHEELCHAIR RAMPS SHALL BE CONSTRUCTED IN CONFORMANCE WITH THE CURRENT REGULATIONS OF THE ARCHITECTURAL ACCESS BOARD, THE AMERICANS WITH DISABILITIES ACT AND THE CURRENT MASSHIGHWAY CONSTRUCTION STANDARDS.



TYPICAL INSTALLATION



DETAIL OF DETECTABLE WARNING PANEL



NOTE:

PANELS SHALL BE "BRICK RED" IN COLOR AND SHALL BE CAST-IN-PLACE WITH WHEELCHAIR RAMP CEMENT CONCRETE. SURFACE APPLIED TACTILE PANELS SHALL NOT BE UTILIZED.



TOWN OF FRAMINGHAM  
DEPARTMENT OF PUBLIC WORKS

DETECTABLE WARNING PANEL

DATE:  
MARCH 2011

REV:  
1

DETAIL NO.

R-5.3.6